



# Southeastern Wisconsin FOX RIVER COMMISSION

Implementation Plan Update:  
Status Report

# PREFACE

# Mission:

- Develop and implement **plans** to:
  - Protect and rehabilitate water quality
  - Protect and enhance recreational use
  - Increase water and boating safety
- Develop and propose to the county boards **programs and projects** to:
  - Construct and maintain public boating facilities
  - Maintain park and natural areas
  - Implement shoreland management measures
  - Maintain and improve locks and dredge waterways
- Create advisory committees as necessary
- Adopt rules as necessary

# Mandate:

- **Plan(s)** (per S. 33.59(2)) must address:
  - Selective dredging of the Waterford Impoundment
  - Clearance of debris jams
  - Water use
  - Waterford Dam operations including winter drawdown
  - Streambank erosion protection
  - Automating Waterford Dam operations
  - Maintenance, protection and improvement of shorelines
  - Recreational access and facilities
  - Water safety and regulations

# Commissioner Duties:

- Initiate and coordinate data gathering
- Maintain liaison with federal, state, and local governments and other organizations involved in water resources projects and programs
- Develop an information and education (I&E) program

# INTRODUCTION

# Points to be discussed

- Status of Plan Update
  - Overview of excursion by SEWRPC and Waukesha County staff: August 17-19, 2010
- Review of Jurisdiction
  - Alternatives for consideration
- Funding Opportunities
  - Possible use of grants
  - Partnerships, and other funding sources

**ISSUES OF CONCERN IDENTIFIED  
DURING THE RECONNAISSANCE**

# Major Issues of Concern

- Debris Jams
- Tree Falls
- Flood Debris
- Shoreland Erosion
  - especially on outside river bends
- Nonnative Species
  - Especially incipient stands of Phragmites
- Human Encroachment

# Debris Jams







Note increasingly turbid water

# Tree Falls





# Flood Debris





Silt deposition



# Streambank Erosion







# Invasive and Non-native Species



# *Phragmites australis*, common reed



Restricted  
pursuant to  
Chapter NR 40,  
*Wisconsin  
Administrative  
Code*

# *Lythrum salicaria*, Purple loosestrife



Restricted  
pursuant to  
Chapter NR 40,  
*Wisconsin  
Administrative  
Code*



# *Myriophyllum spicatum*, Eurasian water milfoil



Restricted  
pursuant to  
Chapter NR 40,  
*Wisconsin  
Administrative  
Code*



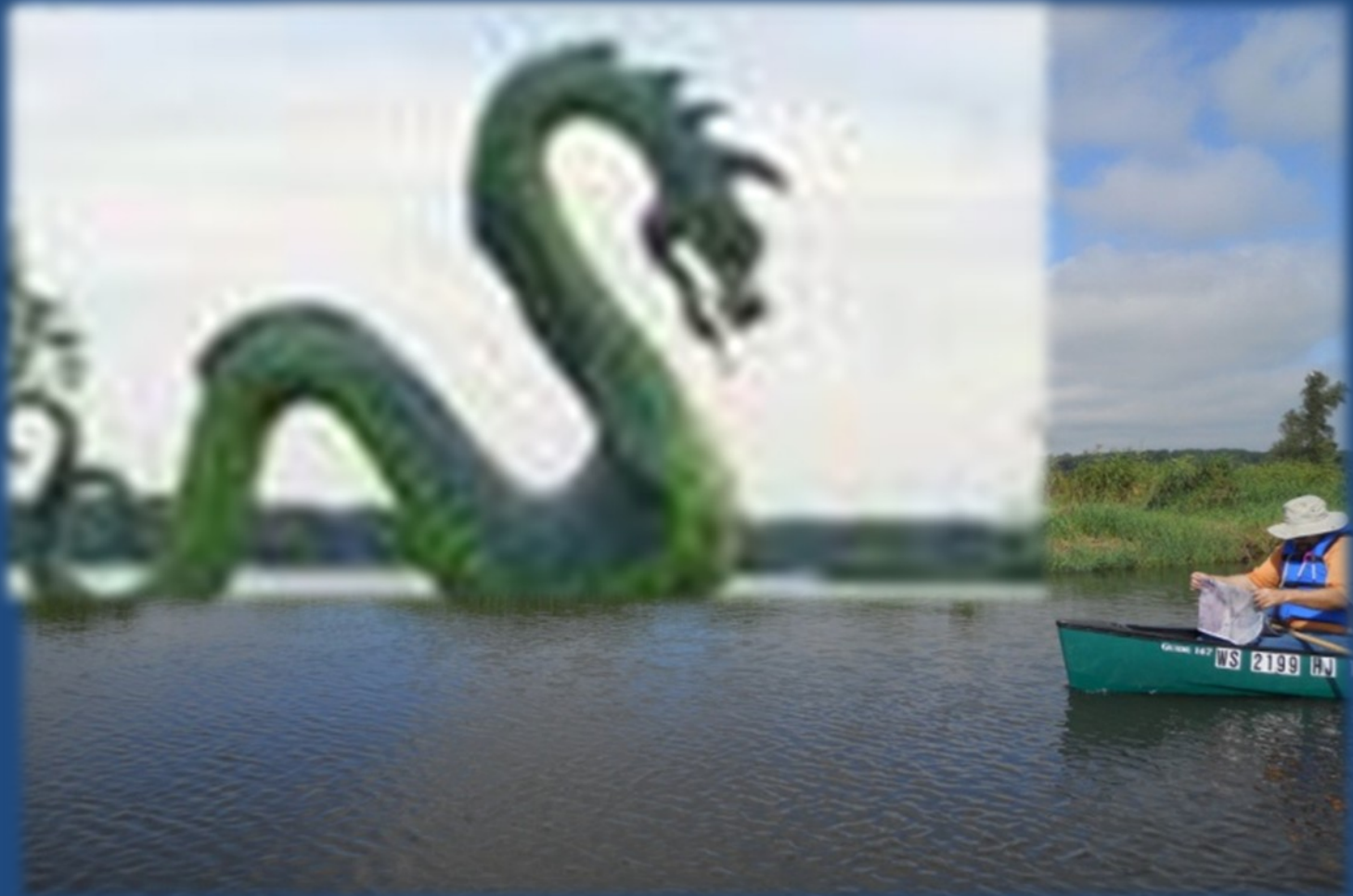
# *Potamogeton crispus*, Curly-leaf pondweed



Restricted  
pursuant to  
Chapter NR 40,  
*Wisconsin  
Administrative  
Code*



# *Mishegenabeg (Mishebeshu)*



# Human Activities















Despite the human encroachments, large portions of the River retain a natural character and support numerous fish and wildlife

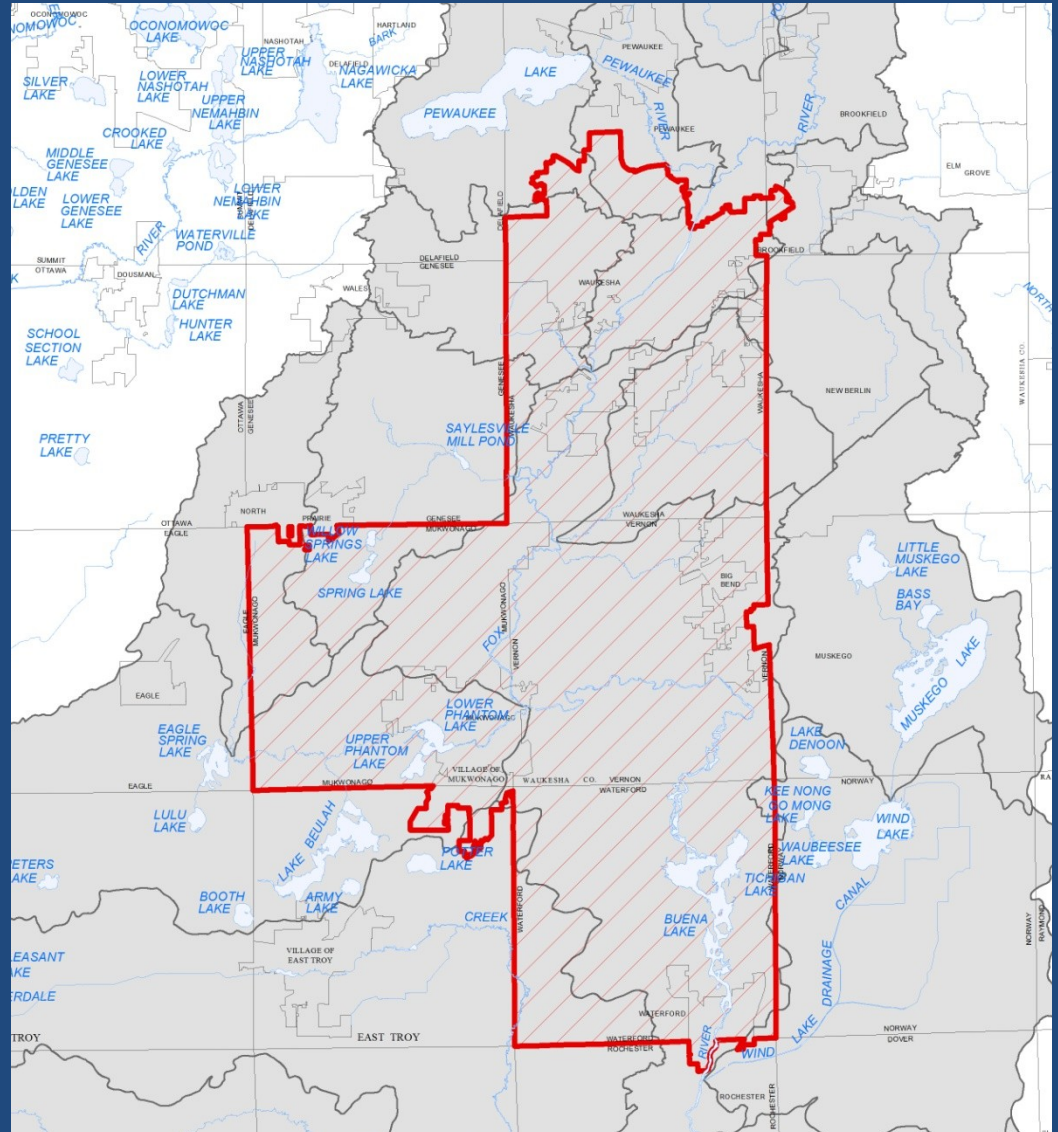


# **ISSUES RELATING TO THE JURISDICTION OF THE SEWFRC**

# Jurisdictional Issues

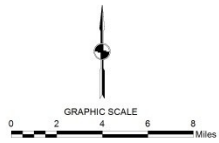
- Boundary and Commission established by Legislature
  - Chapter 33, Stats., Subchapter VI
    - Racine and Waukesha Counties
    - City of Waukesha
    - Villages of Big Bend, Mukwonago, and Waterford
    - Towns of Mukwonago, Vernon, Waterford, and Waukesha

# Current Boundary



 EXISTING SOUTHEASTERN FOX RIVER COMMISSION BOUNDARY

 SUBWATERSHED BOUNDARIES OF THE FOX RIVER WATERSHED

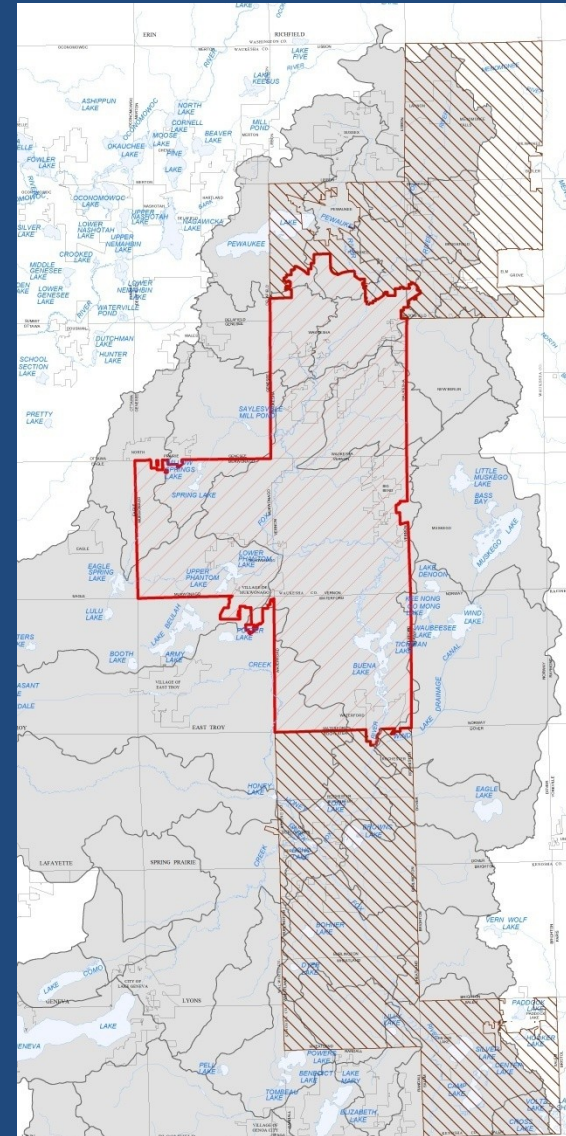
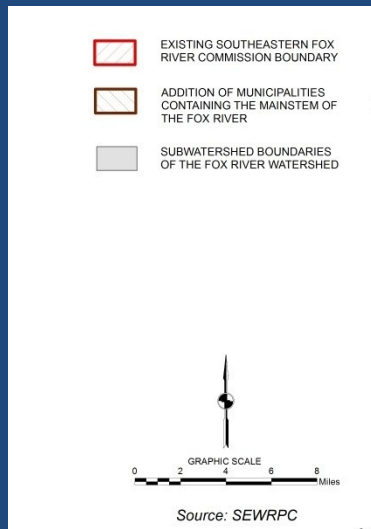


Source: SEWRPC

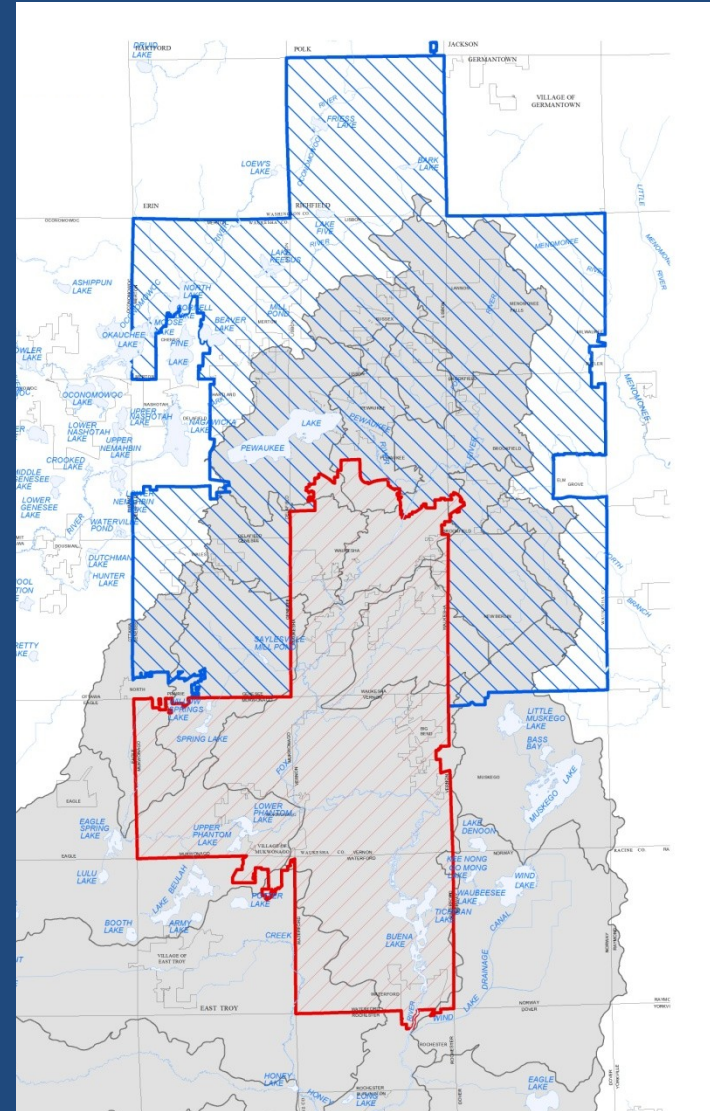
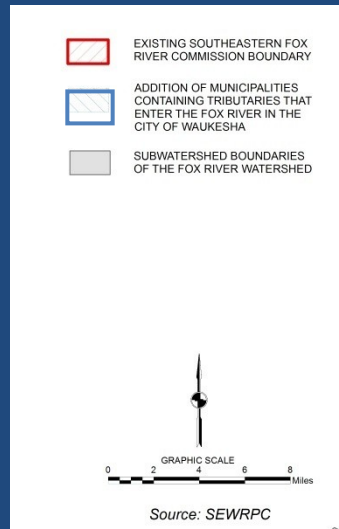
# Legislative Issues

- Legislative action would be required to amend Chapter 33 provisions
- Consideration would have to be given to altering the numbers of Commissioners and defining a quorum, among other issues
- Modification of the Commission could be brought into line with the provisions of Section 33.33 (affecting lake districts)

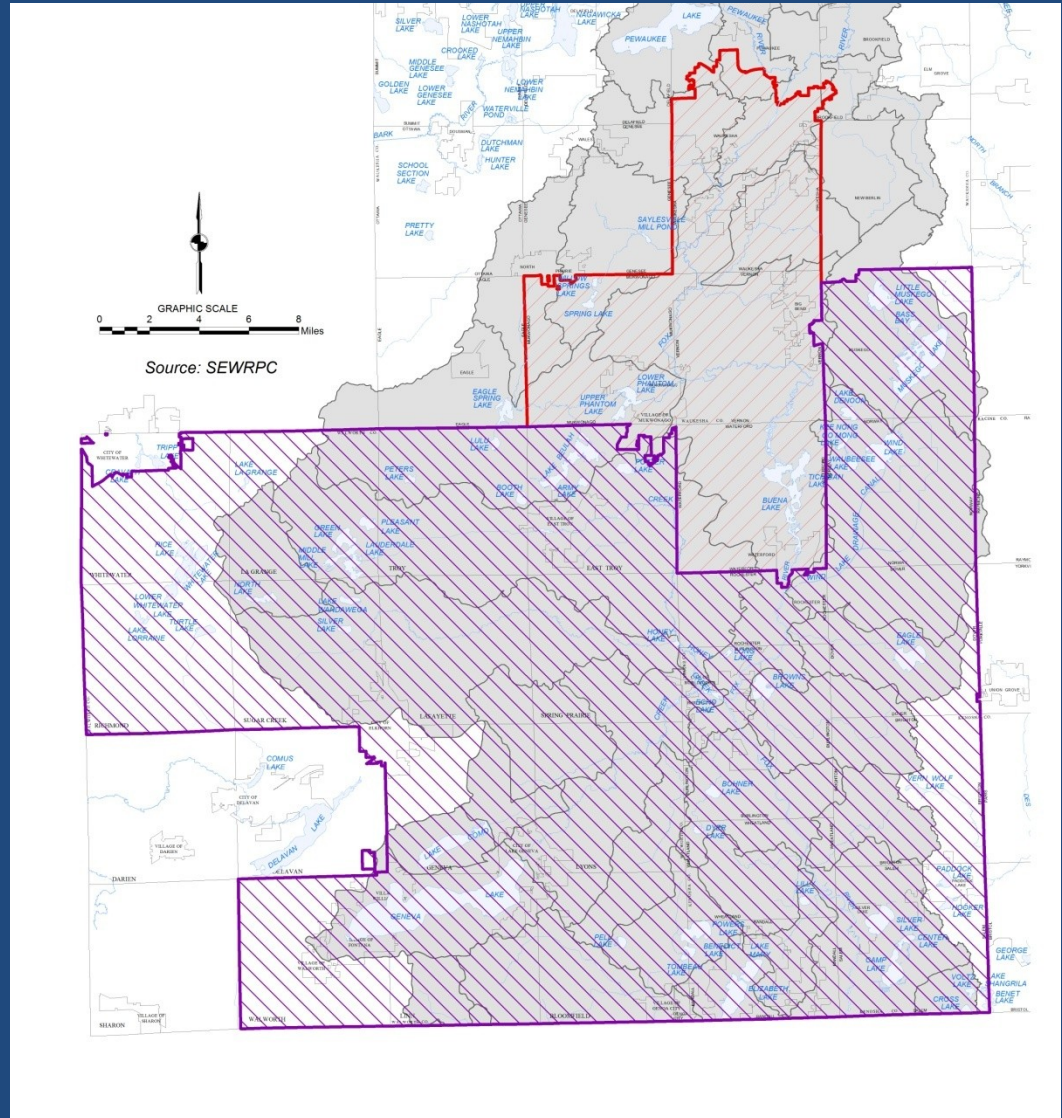
# Alternative: Mainstem of the Fox River



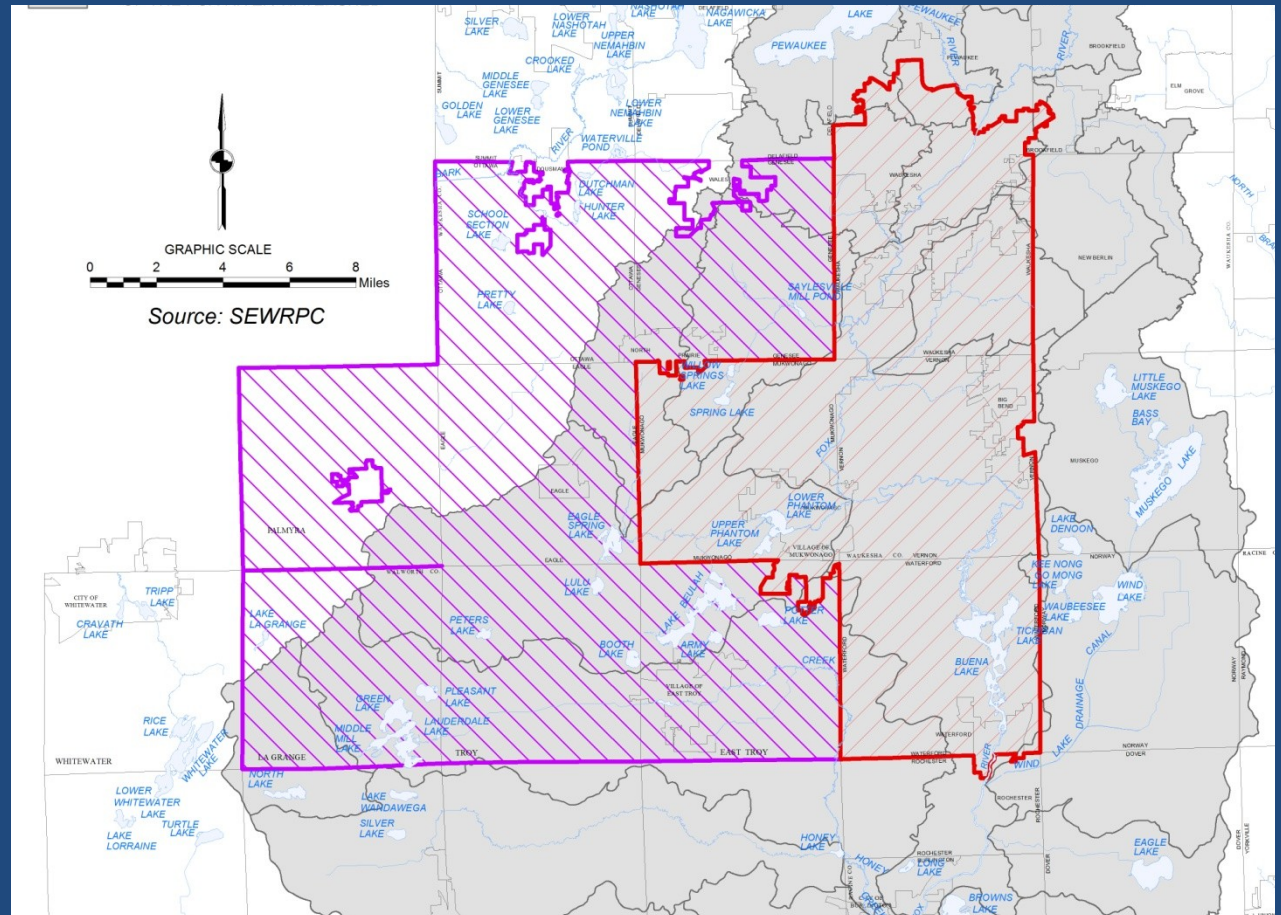
# Alternative: Upper Fox River Subbasin



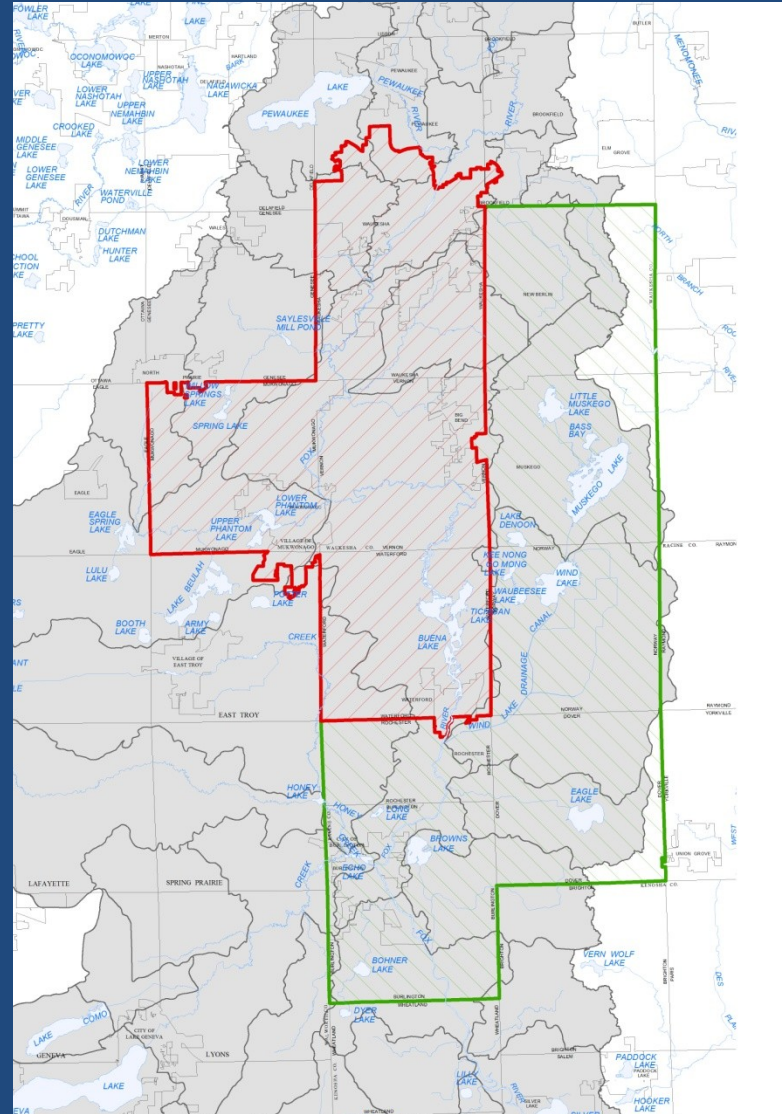
# Alternative: Lower Fox River Subbasin






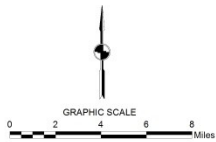
# Alternative: Mukwonago River Subbasin



# Alternative: Muskego/Wind Lakes Subbasin



-  EXISTING SOUTHEASTERN FOX RIVER COMMISSION BOUNDARY
-  ADDITION OF MUNICIPALITIES CONTAINING TRIBUTARIES THAT ENTER THE FOX RIVER IN THE VILLAGE OF ROCHESTER
-  SUBWATERSHED BOUNDARIES OF THE FOX RIVER WATERSHED



Source: SEWRPC



# **ISSUES RELATING TO THE FUNDING OF THE SEWFRC**

# Funding Issues

- SEWFRC has been funded historically through direct appropriations administered by WDNR
- Legislature envisioned funding by the counties (and/or municipalities); SEWFRC also may be grant eligible
- Partnerships
- Implications for budget cycle

# Appropriations and Aids



- Section 33.54 “A county or river municipality may appropriate money to the commission.”
- Section 33.54 “The commission, a county or river municipality may solicit gifts, grants and other aid for the commission to enable the commission to perform the functions of this subchapter.”

# Appropriation Process

- Section 33.60 (1)(a) Calendar year = Fiscal year
- Section 33.60(1)(b) Budget must include **revenue sources**, **appropriations** by activity, **actual budget** for previous year, **year-to-date** budget, and **fund balances**
- Section 33.60(1)(c) Class 1, 15-day notice required for budget hearing
- Section 33.60(1)(d) Notice must contain budget summary
- Section 33.60(2) Budget hearing procedure
- Section 33.60(3) Budget to be submitted to the counties for incorporation into county budgets (subject to Sections 59.60 and 65.90, Stats.)

# Grants-in-Aid

- NR 7 Recreational Boating Facilities
- NR 50/51 Stewardship
- NR 153/155 Urban Nonpoint and Targeted Runoff Management
- NR 190 Lake Management Planning
- NR 191 Lake Protection
- NR 195 River Planning and Protection
- NR 198 Aquatic Invasive Species Control

These are cost-share grants, requiring a local share.

# Eligibility

- “Local governmental unit” means a political subdivision of this state, a special purpose district in this state, an agency or corporation of a political subdivision or special purpose district, or a combination or subunit of any of the foregoing.

» S. 66.0131 (1) (a), Stats.

# Partnerships with government

- Special purpose units of government
  - Waterford Waterway Management District
  - Waterford Sanitary District No. 1
  - Waterford Drainage District No. 1
- Fox Waterway Agency (IL)

# Partnerships with NGOs

- Fox River Partnership
- Fox River CAUSE (Citizens Against Underwater Sediment and Erosion)

# Implications for Fiscal Management

- County and municipal budget cycle
  - Begins in July to be completed by October 15<sup>th</sup>
- Grant cycles
  - Generally annual with submission deadlines between February and May
- Current SEWFRC budget cycle
  - December budget hearing

# Concluding Thoughts

- Timeline
  - Regional Planning Commission staff will continue to develop the Implementation Plan through the autumn