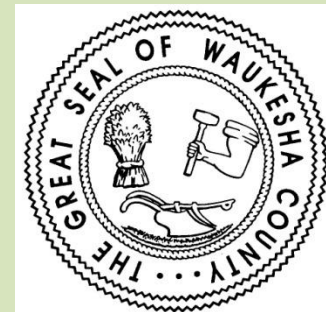


Progress Report for SE WI Fox River Commission

Mill Creek Drainageway Improvement



Project Location

Commission Planning Area

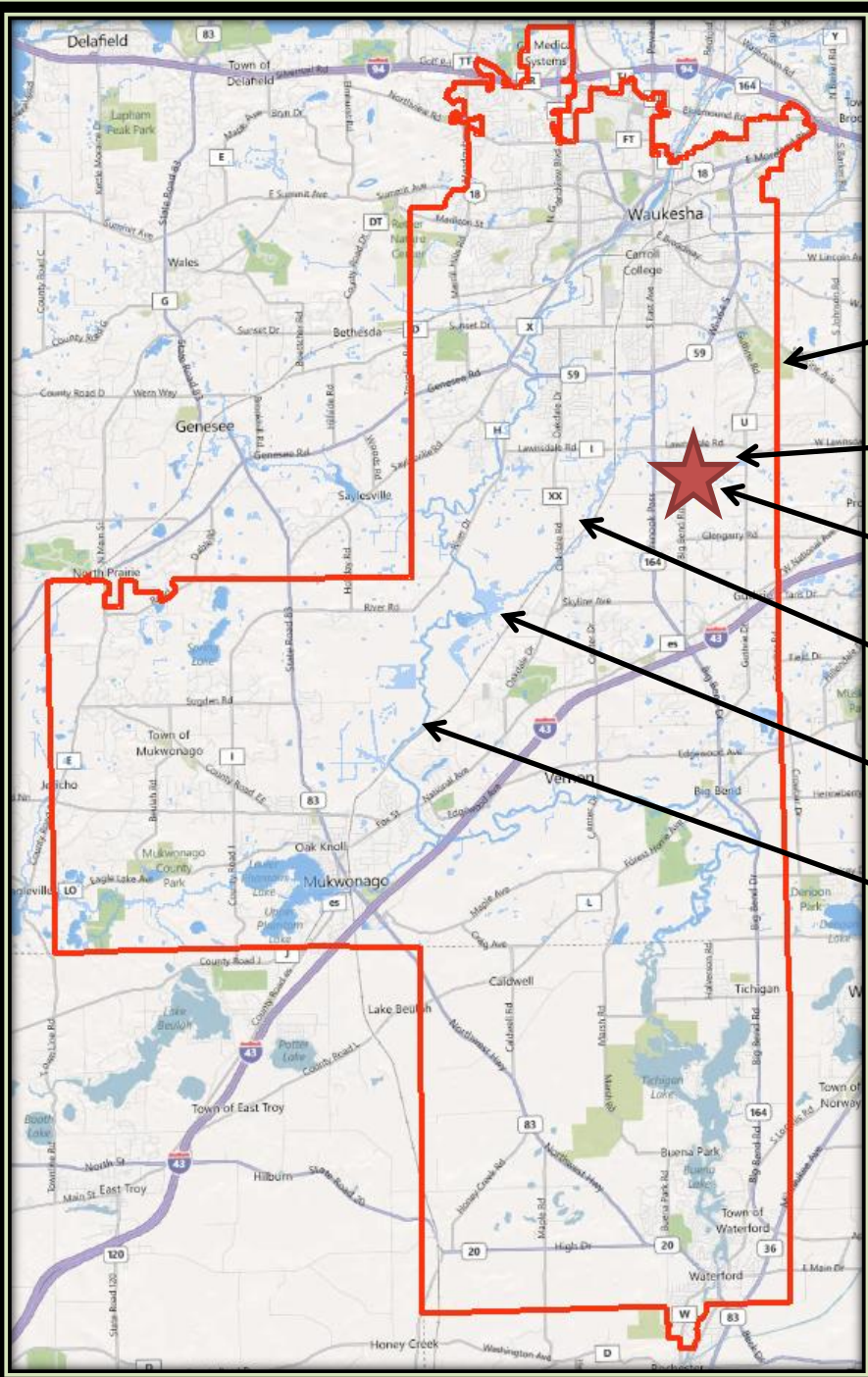
Project Location in the Town of Waukesha on County-owned Land

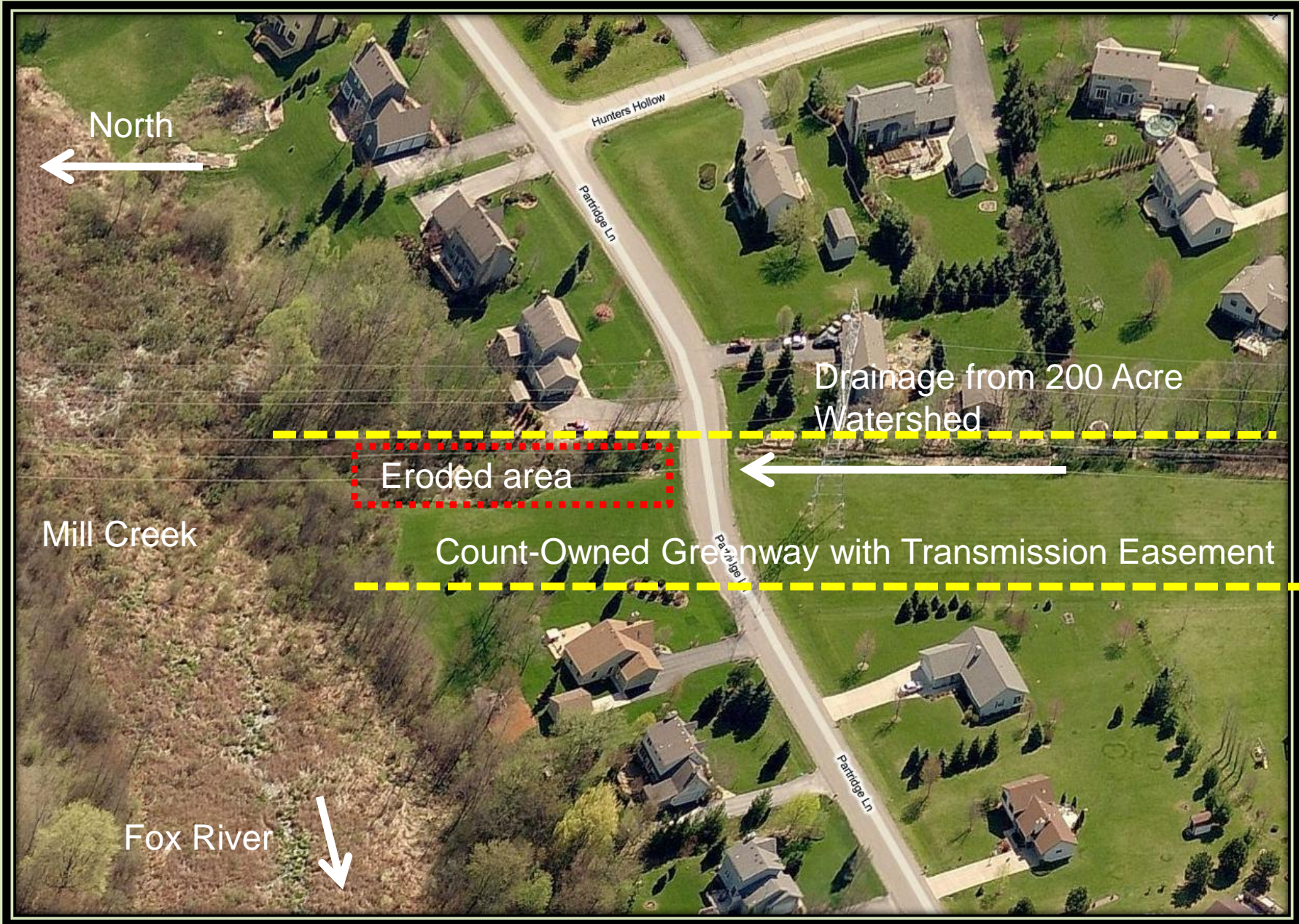
Mill Creek

Pebble Brook

Vernon Marsh

Fox River





Flow 20 Hours After 5-Inch Rainfall



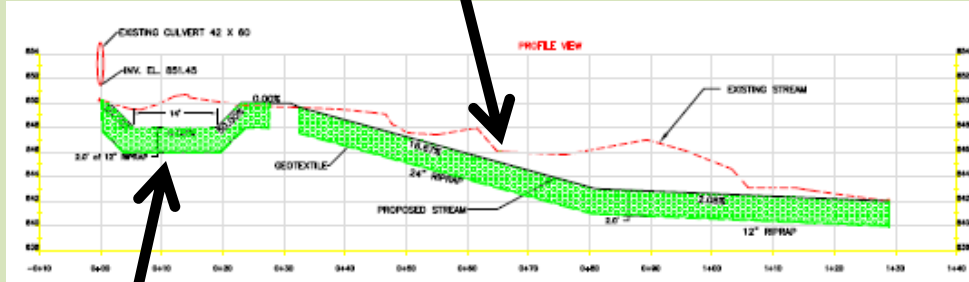
Eroded Material in Mill Creek Floodplain



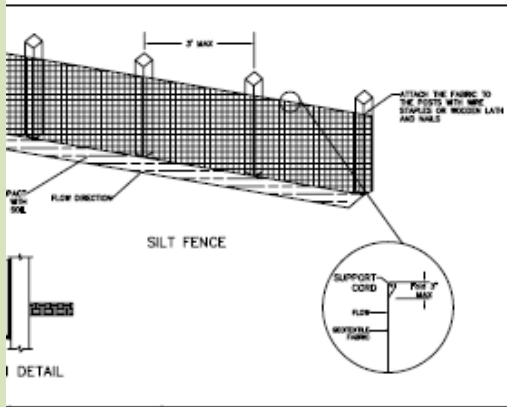
Plans

Even Out Slope

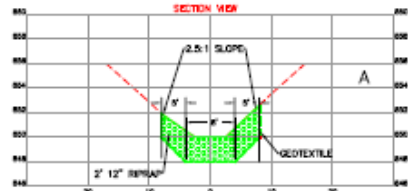
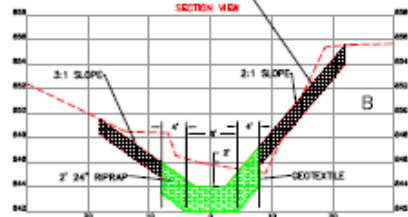
Slope Stabilization,
Vegetated Retaining
Wall



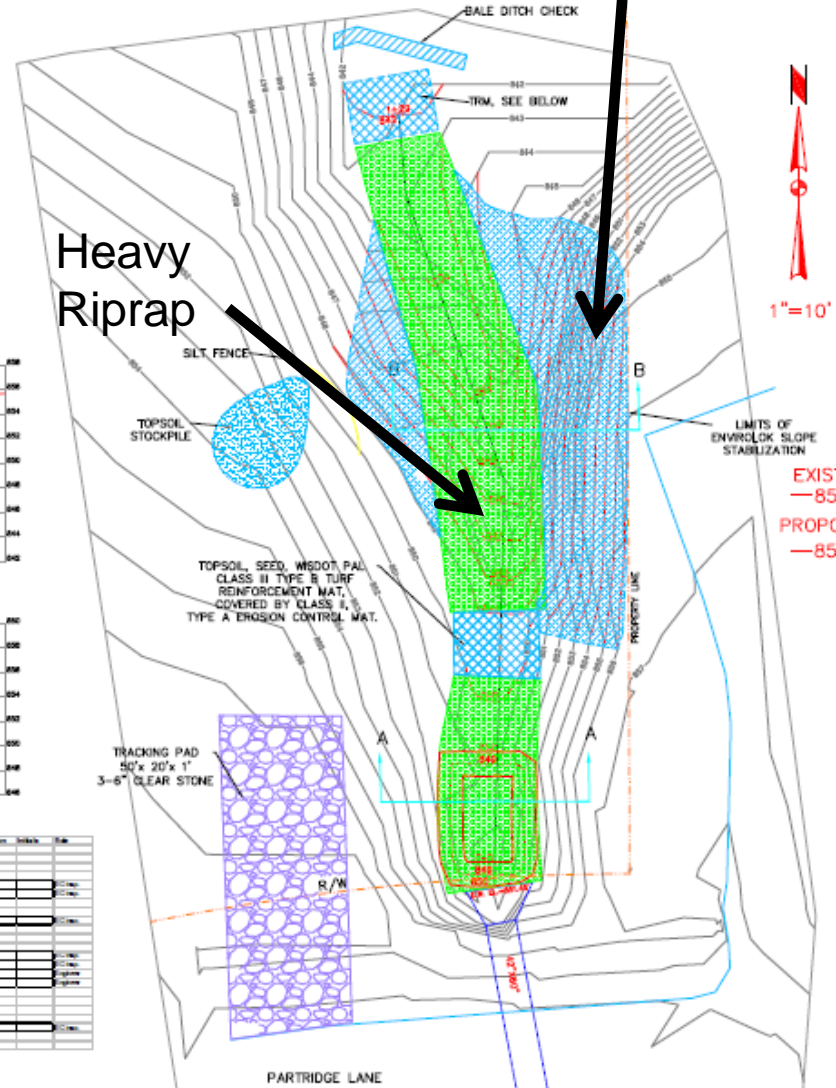
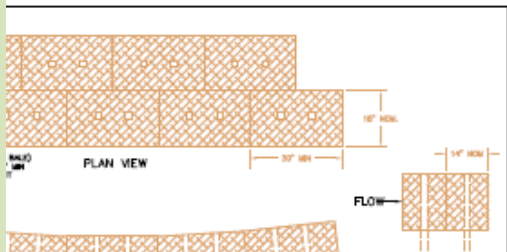
Stilling Basin



AGRICULTURE LANDLOK SLOPE STABILIZATION SYSTEM OR APPROVED EQUIVALENT SEE FIGURE 2 FOR DETAIL



Item	Description	Material or Unit	Quantity	Unit	Notes
1.00	1.00	1.00	1.00	1.00	1.00
2.00	2.00	2.00	2.00	2.00	2.00
3.00	3.00	3.00	3.00	3.00	3.00
4.00	4.00	4.00	4.00	4.00	4.00
5.00	5.00	5.00	5.00	5.00	5.00
6.00	6.00	6.00	6.00	6.00	6.00
7.00	7.00	7.00	7.00	7.00	7.00
8.00	8.00	8.00	8.00	8.00	8.00
9.00	9.00	9.00	9.00	9.00	9.00
10.00	10.00	10.00	10.00	10.00	10.00
11.00	11.00	11.00	11.00	11.00	11.00
12.00	12.00	12.00	12.00	12.00	12.00
13.00	13.00	13.00	13.00	13.00	13.00
14.00	14.00	14.00	14.00	14.00	14.00
15.00	15.00	15.00	15.00	15.00	15.00
16.00	16.00	16.00	16.00	16.00	16.00
17.00	17.00	17.00	17.00	17.00	17.00
18.00	18.00	18.00	18.00	18.00	18.00
19.00	19.00	19.00	19.00	19.00	19.00
20.00	20.00	20.00	20.00	20.00	20.00
21.00	21.00	21.00	21.00	21.00	21.00
22.00	22.00	22.00	22.00	22.00	22.00
23.00	23.00	23.00	23.00	23.00	23.00
24.00	24.00	24.00	24.00	24.00	24.00
25.00	25.00	25.00	25.00	25.00	25.00
26.00	26.00	26.00	26.00	26.00	26.00
27.00	27.00	27.00	27.00	27.00	27.00
28.00	28.00	28.00	28.00	28.00	28.00
29.00	29.00	29.00	29.00	29.00	29.00
30.00	30.00	30.00	30.00	30.00	30.00
31.00	31.00	31.00	31.00	31.00	31.00
32.00	32.00	32.00	32.00	32.00	32.00
33.00	33.00	33.00	33.00	33.00	33.00
34.00	34.00	34.00	34.00	34.00	34.00
35.00	35.00	35.00	35.00	35.00	35.00
36.00	36.00	36.00	36.00	36.00	36.00
37.00	37.00	37.00	37.00	37.00	37.00
38.00	38.00	38.00	38.00	38.00	38.00
39.00	39.00	39.00	39.00	39.00	39.00
40.00	40.00	40.00	40.00	40.00	40.00
41.00	41.00	41.00	41.00	41.00	41.00
42.00	42.00	42.00	42.00	42.00	42.00
43.00	43.00	43.00	43.00	43.00	43.00
44.00	44.00	44.00	44.00	44.00	44.00
45.00	45.00	45.00	45.00	45.00	45.00
46.00	46.00	46.00	46.00	46.00	46.00
47.00	47.00	47.00	47.00	47.00	47.00
48.00	48.00	48.00	48.00	48.00	48.00
49.00	49.00	49.00	49.00	49.00	49.00
50.00	50.00	50.00	50.00	50.00	50.00



Project Summary

- Project Manager: Leif Hauge, PE, P Hydrologist
Waukesha County PLU
- Estimated Project Cost: \$30,000
- Requested Funding from SEWFRC: \$20,000
- Percent Paid for by SEWFRC: 67%
- Actual costs: Invoices not yet received
- Actual Start Date: 7/9/2012
- Actual Completion Date: 7/12/2012

Grading Drainageway, Erosion Control



Over-Excavating Stilling Basin



Most-Eroded Bank After Being Filled



Geotextile Under Riprap



Placing 18-Inch Riprap



Riprap Delivery. Note Claw on Excavator



Lining Stilling Basin



Fitting Riprap Together



Riprap in Stilling Basin



Materials for Vegetated Retaining Wall

Sandbags, Polymer, Prairie Seed, Temp Seed, Wood fiber, Net-Free Mat



Filling Sandbags For Retaining Wall



Spikes to Lock Bags Together



Transferring Sandbags Across Drainageway



Completing Sandbag Placement



Mixing Seed Slurry to Cover Retaining Wall



Covering Sandbags with Seed Slurry



Covering Retaining Wall With Net-Free Wood Fiber Blanket



Stapling Erosion Control Matting



Irrigation Setup



Grass Germinating After 1 ½ Weeks





Before

After



07/31/2012